

Alaska Department of Fish and Game

Habitat Section
Southeast Region



105-32-10190 Tributary 4

ADDITION

Waterbody name:

Quad: Petersburg D-6

Upper Reach Latitude: 56.856414 **Longitude:** - 133.660820

Lower Reach Latitude: 56.855125 **Longitude:** -133.662285

Survey date: 6/7/2023

Species & Lifestage:

Survey crew: FC, CD

Findings: We surveyed this uncataloged stream using minnow traps baited with disinfected salmon eggs and GPS and captured juvenile coho salmon and Dolly Varden(Figure 1). The stream channel runs through a forested wetland and has spawning gravel near the 4' corrugated steel culvert (Table 1; Figures 2, 3).

Recommendations: Add this uncataloged stream to the anadromous waters catalog for rearing coho salmon (Figure 4).

Nomination: Pending

Table 1.—105-32-10190 tributary 4 survey data.

Waypoint	Latitude	Longitude	Notes	Stream Width ft	Stream Substrate	Habitat Features	Gradient %	Sample Effort	Sample Results
153	56.856473	-133.660648	2 minnow traps soaked overnight upstream and downstream of 4' CSP with small and large gravel infill and slow but consistent flow through pipe. Downstream fish capture: 2 CO, 3 DV; upstream: no fish capture.	6-8	Small Gravel Large Gravel		1-2	MT	2 CO 3 DV



Figure 1.—Juvenile coho salmon captured at waypoint 153.



Figure 2.—Channel at waypoint 153, downstream from the road.



Figure 3.—Channel at waypoint 153, upstream from the road.

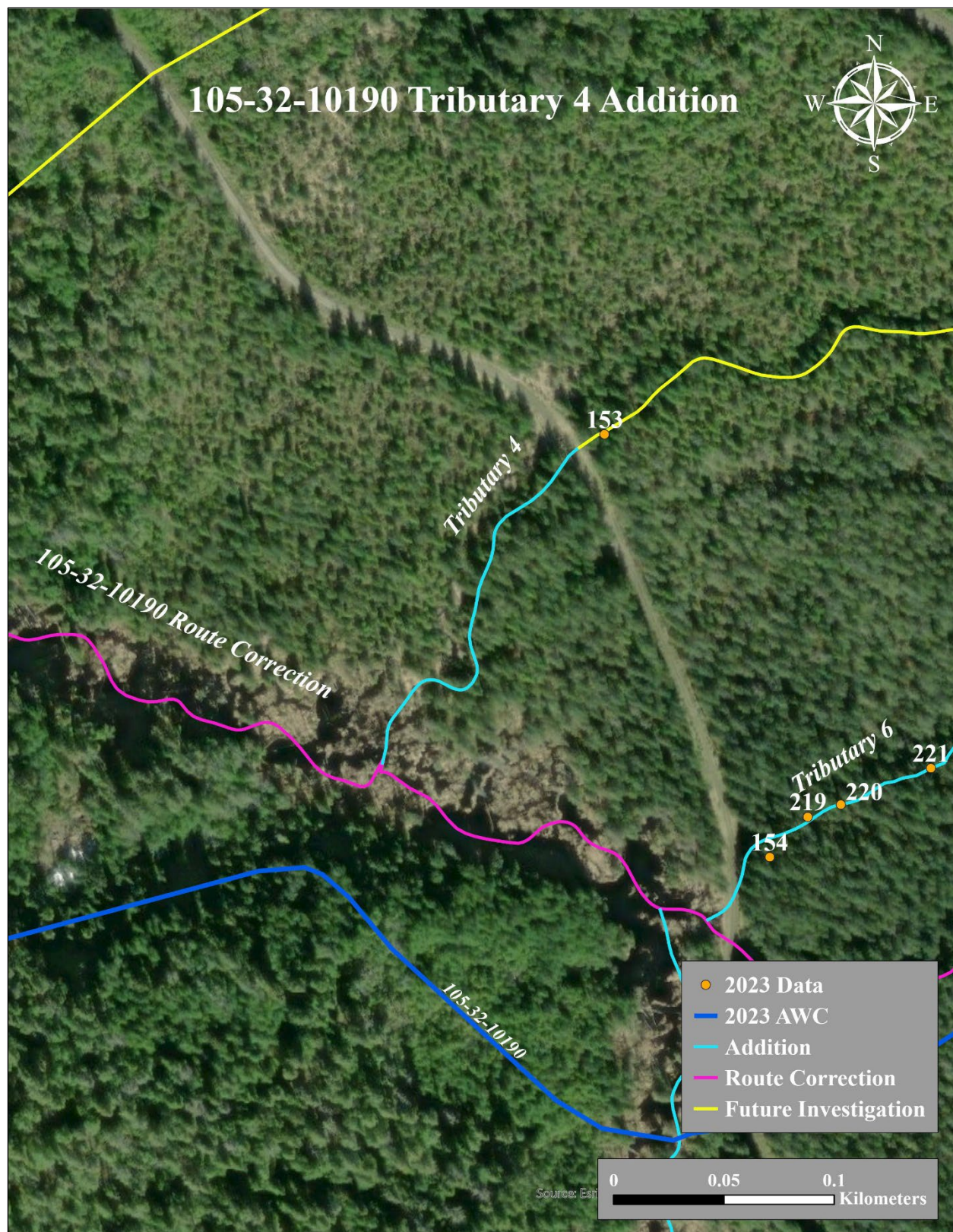


Figure 4.—105-32-10190 Tributary 4 addition map.